

**GRACE**<sup>®</sup>  
BIO-CARE PVT. LTD.

GROW **MORE.**  
GROW **HEALTHY.**



[www.gracebiocare.com](http://www.gracebiocare.com)

## About Company

Started in 1999, Grace Bio Care Pvt. Ltd. has been serving the agricultural industry of India with its niche product offerings. It is engaged in the business of manufacturing, distributing, and marketing of a wide range of Bio-Pesticides and CIB Registered Chemical Pesticides such as insecticides, fungicides, herbicides, plant growth regulators to B2B customers. We have been serving in the Biotechnology field for than 25 years and has given many result-oriented products. We now also engage in the agrochemical product range under brands in-licensed by us, and through generic brands make it reachable to the Indian farmers through our distribution network.

With an aim to offer a wide product portfolio across the Agri-value chain, we continue to expand our product portfolio by introducing new products. We manufacture and sell various formulations of insecticides, fungicide and herbicides and plant growth regulators as on the date of this Draft Red Herring Prospectus, we have obtained 200+ registrations for agrochemical formulations from the CIB&RC for sale in India. Additionally, we also apply to procure Licences of new generation CIB registered products which are coming in market.

We consider it our sincere responsibility to make the agricultural world more productive by our bio products usage more conducive and farmer friendly. We aim to offer high-quality, innovative, effective crop-protection and food safety solutions to our farmers and serve our nation through agriculture. The GBC team creates efficient solution for the clients by carefully observing the market, closely monitoring the on-field trends, understanding their needs, and fulfilling their requirements.

Our products are well researched, high-quality, economically priced, and easily accessible almost all over India and aim to make it available globally in the coming years.

We have grown with our farmers, and it becomes our moral duty to thank them and promote quality products among them.

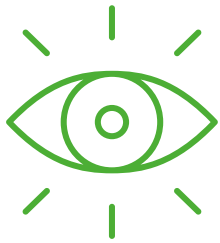
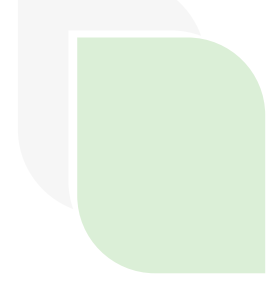
## Management

Managing Director: Rameshbhai Thakarshibhai Dalsania

Mr. Rameshbhai Thakarshibhai Dalsania is the founder and managing director of GBC and a dynamic businessman. He is a result driven, self-motivated, and committed person with a proven ability of more than 35 years of rich experience in the agriculture industry. He holds the M.Sc Agriculture degree from Gujarat Agriculture University. Having worked in big multinational and reputed Indian Agro-chemical manufacturing companies he has mastered in the field of product development, product registration, packaging development, national level marketing and promotional activities. With years long experience is when he finally decided to do something of his own and that is when the birth of GBC took place is 1999. Going through lots of struggles, hardships, experience, and rapport with other Indian agrochemical companies he has made GBC, as it stands tall today.

Director: Keyur Rameshbhai Dalsania

Mr. Keyur Dalsania has joined GBC in 2014. He has since then led the company from strength to strength, overseeing its emergence as one of the fastest growing agrochemical companies. As a director he oversees the overall functioning at GBC. He has got a great grip on the matters related to new product development, R&D, production, purchase, quality check and Marketing. He holds the bachelor's degree of Civil Engineering, but his academic qualification at no time has restrained his excellence and far-sighted vision.



## Vision

Our vision is to become the most desired and leading national manufacturer and distributor of Bio-Pesticides, Chemical Pesticides and Plant Growth Regulators. Make new innovations of effective quality crop protection products that caters to the farmers needs to boost crop production while preserving the environment and is cost effective that results in the most astonishing and result driven concept of agriculture.

## Mission

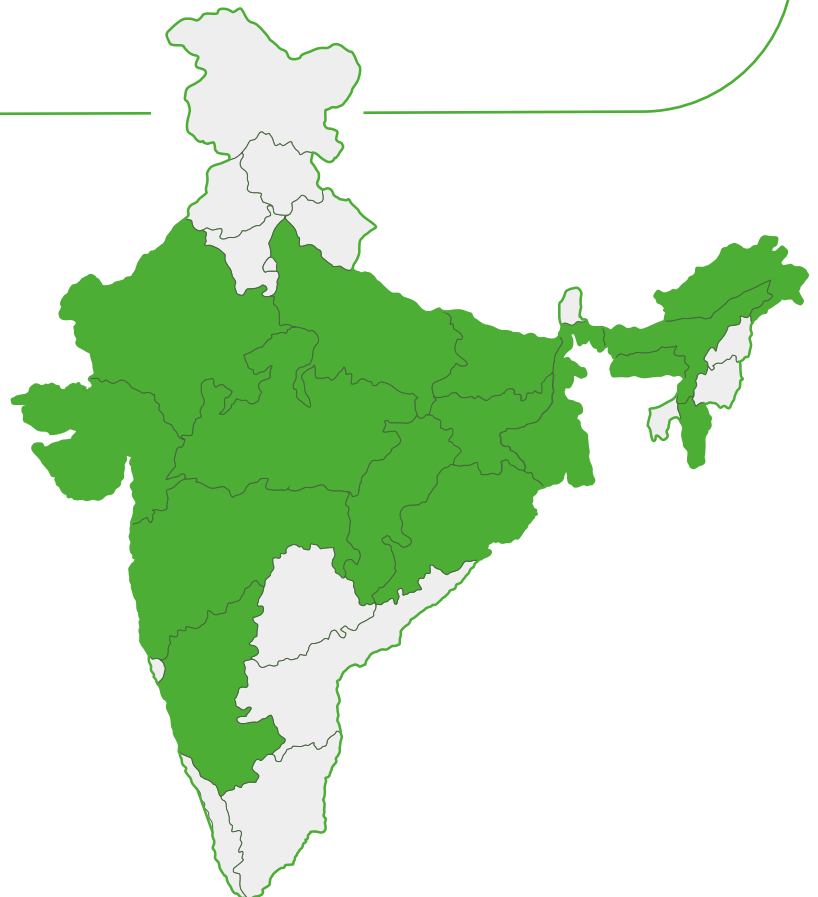
- To provide apt and useful solution to crop protection for the farmers across the nation.
- To strengthen our markets all over the nation.
- To share close relation with our customers, employees, and the community.
- To create a farmer delight through regular innovations.



## Business Area

Since a decade, GBC has emerged into the market as one of the largest players in the bio and agrochemical market, with a network that extends over 15 states in India and over 500+ dealers and distributors across the country. And we look forward for a greater reach soon.

Today GBC enjoys super powerful Brand recognition for the consistent quality products with aesthetic packaging and value.





## Manufacturing Units

GBC is a manufacturing facility that specializes in the manufacturing and packaging of Bio-Pesticides, Chemical Pesticides and Plant Growth Regulators products. It is located at Unit-1: 342-343-344-349-350, Savli GIDC Industrial Estate, Manjusar, Savli, Vadodara, Gujarat 391775 covering around 5000 sq. mtr of land and Unit-2: 369, Savli GIDC Industrial Estate, Manjusar, Savli, Vadodara, Gujarat 391775 covering around 2700 sq. mtr of land with full equipped facilities within the factory premises.

The facility caters to various product ranges and a variety of formulations including EC, EW, SL, WP, SP, WDG, SG, SC, CS, FS, ZC, ME, SE, OD etc. also, we have excellent packaging machinery for liquid-based formulations and granules-based products. Our plant is well equipped with advanced fully and semi-automatic manufacturing equipments and analytical instruments to manufacture quality a.i. and formulations.

We also have our own godown at Aslali, Ahmedabad for the storage and distribution of our products all over Gujarat and other states.

Present Formulation Capacities in Single working Shift:-

EC/EW/SL: 3500KL per Annum.

SC/FS/CS/ZC/OD/SE: 1600KL to 1800KL per Annum depending on type of formulation.

SG/WG: 400MT to 500MT per Annum.

WP/SP: 400MT to 500MT per Annum.

Present Packaging Capacities in Single working Shift:-

Liquid Products:- 3000KL to 4000KL per Annum.

Granules Products:- 400MT to 500MT per Annum.

All above Formulation and Packaging Facilities are further to increase as and when GBC products demands increases in market.

## QC/QA and R&D

GBC's QC/QA and R&D facility manages the bulk of in-house testing and R&D needs for its various business functions.

With state-of-the-art equipments and an experienced team of chemists and technicians, the facility is a valuable step towards GBC's goal of becoming an innovation leader and fully integrated provider of crop protection.

GBC significantly invests in a fully integrated testing and research laboratory with advanced instrument like GC, HPLC, UV, viscometer, PH Meter, Lab scale Beadmill, Titration setup, PSA, Lab Oven, Reference Standards of Dr. Ehrenstorfer etc.

With these facilities GBC will be able to cater to the rising demands of the agro market.

## Insecticides

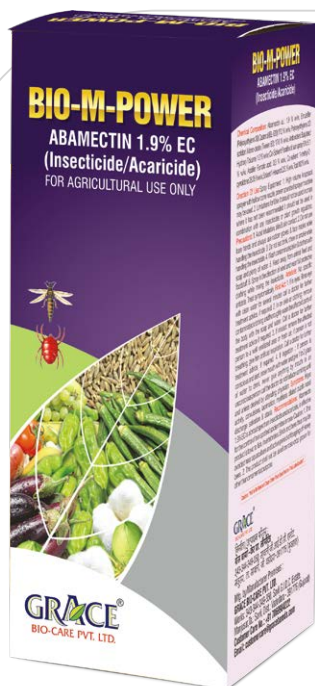


### Bio Dose Magnum Emamectin Benzoate 1.9% EC

Bio Dose Magnum is a stomach and contact insecticide that controls caterpillars effectively when ingested. It provides excellent control over various leaf-eating pests such as caterpillars, leaf miners, diamondback moth and thrips on all types of crops.

**Dosage:** 200 ml per acre

**Packing:** 20 ml, 100 ml, 250 ml, 500 ml, 1 litre

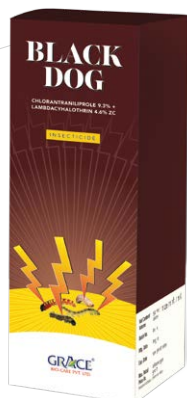


### Bio M Power Abamectin 1.9% EC

Bio M Power is a broad-spectrum acaricide and insecticide. With contact, stomach and translaminar action, it provides highly effective control of thrips, mites and leaf miners.

**Dosage:** 150-200 ml per acre

**Packing:** 15 ml, 100 ml, 250 ml, 500 ml



## Black Dog

**Chlorantraniliprole 9.3% + Lambda Cyhalothrin 4.6% ZC**

Black Dog is a new-generation ZC technology-based broad-spectrum insecticide that provides fast and long-lasting control against diamondback moth, fall armyworm and other lepidopteran pests.

**Dosage:** 80 ml per acre

**Packing:** 25 ml, 80 ml, 200 ml, 500 ml



## Agangola

**Novaluron 5.25% + Indoxacarb 4.5% SC**

Agangola is a combination of two active ingredients offering a synergistic effect that provides comprehensive control of caterpillars and other lepidopteran insects through dual action.

**Dosage:** 350 ml per acre

**Packing:** 100 ml, 250 ml, 500 ml



## Magnum Power

**Emamectin Benzoate 5% SG**

Magnum Power is a water-soluble formulation that causes paralysis in insects upon ingestion, stopping their feeding and thereby preventing crop damage. It gives effective control of caterpillars, thrips and leaf miners in crops like cotton, chickpea and various vegetables.

**Dosage:** 80-100 gm per acre

**Packing:** 10 gm, 50 gm, 100 gm, 250 gm, 500 gm, 1 kg

## Insecticides

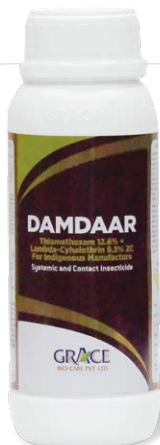


### Grace Spin Spinosad 45% SC

Grace Spin is a biological insecticide naturally derived from *Saccharopolyspora spinosa*. It is used in cotton to control resistant *Helicoverpa* (American bollworm), in chili crops to control fruit borers and thrips, and in gram crops to manage pod borers.

**Dosage:** 75 ml per acre

**Packing:** 7 ml, 75 ml



### Damdaar Thiamethoxam 12.6% + Lambda Cyhalothrin 9.5% ZC

Damdaar is a new-generation ZC formulation with both contact and stomach action. It effectively controls sucking and chewing pests like aphids, jassids, thrips and bollworms in crops like cotton, groundnut, maize, soybean, paddy and others.

**Dosage:** 80 ml per acre

**Packing:** 40 ml, 100 ml, 200 ml, 500 ml, 1 litre



### Old Crow Chlorantraniliprole 18.5% SC

Old Crow is a broad-spectrum insecticide that effectively controls caterpillars and moth larvae across different crops.

**Dosage:** 60 ml per acre

**Packing:** 10 ml, 30 ml, 60 ml, 150 ml, 300 ml, 600 ml



## **Lufenrace** **Lufenuron 5.4% EC**

Lufenrace provides excellent control of diamondback moth and Spodoptera species. It is a molting inhibitor that works effectively on all stages of caterpillars.

**Dosage:** 240 ml per acre

**Packing:** 100 ml, 250 ml, 500 ml, 1 litre



## **County** **Clothianidin 10% + Bifenthrin 8% SC**

County, a combination of neonicotinoid and pyrethroid groups, provides effective control over aphids, jassids, bollworms, whiteflies and leaf-rolling caterpillars on various crops. It acts through three modes-contact, systemic and stomach action-for powerful protection.

**Dosage:** 250-400 ml per acre

**Packing:** 100 ml, 250 ml, 500 ml, 1 litre



## **Dinograce** **Dinotefuran 20% SG**

Dinograce, belonging to the neonicotinoid group, provides quick control of insects through systemic and translaminar action, offering long-lasting protection against pests.

**Dosage:** Paddy: 60-80 gm per acre

Cotton: 50-60 gm per acre

**Packing:** 50 gm, 100 gm, 250 gm

## Insecticides



### Graceiconic Tolfenpyrad 15% EC

Graceiconic is a broad-spectrum contact insecticide used in various crops to control sucking pests such as aphids, thrips, whiteflies, mites and caterpillars. It offers a quick knockdown effect and long residual activity. It also acts as a fungicide, helping to control powdery mildew and anthracnose diseases.

**Dosage:** 400 ml per acre

**Packing:** 100 ml, 250 ml, 500 ml, 1 litre



### Thiicare Top Thiamethoxam 30% FS

Thiicare Top is a versatile, systemic insecticide highly suitable for seed treatment. It protects crops during the early growth stage from sucking pests such as aphids, jassids, thrips, whiteflies and stem borers.

**Dosage:** 5-7.5 ml per kg of seed

**Packing:** 250 ml, 500 ml, 1 litre



### Thiicare Super Thiamethoxam 25% WG

Thiicare Super is a broad-spectrum systemic insecticide that controls soil-borne and sucking pests. It is suitable for application through spraying, drenching or drip irrigation.

**Dosage:** 40-80 grams per acre

**Packing:** 100 gm, 250 gm, 500 gm



## Thiacare Plus Thiamethoxam 75% SG

Thiacare Plus is a multi-activity systemic insecticide that effectively controls soil-borne pests, sucking insects and chewing pests. For best results, dissolve the required quantity of Thiacare Plus in a small amount of water first, then add it to the final required volume of water and apply near the crop root zone.

**Dosage:** 50-64 grams per acre

**Packing:** 50 gm, 125 gm, 250 gm



## Graceguard-1500 Neem seed kernel based EC containing Azadirachtin 0.15% w/w min.

Graceguard-1500 is a neem oil-based botanical insecticide containing Azadirachtin. It controls pests through ovicidal, repellent, anti-feeding and growth-regulating actions.

**Dosage:** 2-2.5 ml per litres of water

**Packing:** 100 ml, 250 ml, 500 ml, 1 litre, 5 litres



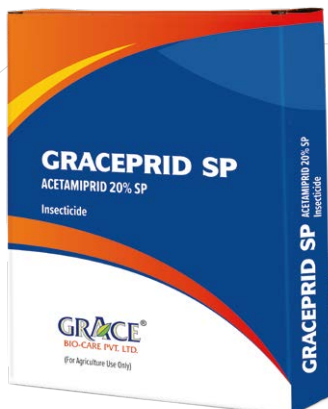
## Graceguard-10000 Neem seed kernel based EC containing Azadirachtin 1% (10000ppm) min

Graceguard-10000 is a plant-based insecticide derived from neem seed extract. It is an eco-friendly product that effectively controls caterpillars, fruit borers and sucking pests.

**Dosage:** 400-600 ml per acre

**Packing:** 250 ml, 500 ml, 1 litre

## Insecticides



### Graceprid SP Acetamiprid 20% SP

Graceprid SP is an ideal neonicotinoid-group systemic insecticide that provides quick control of various sucking pests such as aphids, whiteflies, jassids, and hoppers.

**Dosage:** 20-40 gm per acre

**Packing:** 50 gm, 100 gm, 250 gm, 500 gm, 1 kg



### Refresh Diafenthiuron 47.8% SC

Refresh is a new-generation insecticide containing a thio-urea compound. It acts by degrading through environmental and metabolic processes within insects for effective pest control. Refresh provides excellent control of whiteflies resistant to other insecticides.

**Dosage:** 200 ml per acre

**Packing:** 20 ml, 100 ml, 200 ml, 500 ml, 1 litre



### Jamavat-505 Chlorpyrifos 50% + Cypermethrin 5% EC

Jamavat-505 is a combination of organophosphorus and synthetic pyrethroid compounds that effectively controls sucking pests and bollworms.

**Dosage:** 300-400 ml per acre

**Packing:** 100 ml, 250 ml, 500 ml, 1 litre



## **Supremo-404** **Profenofos 40% + Cypermethrin 4% EC**

Supremo-404 is a mixture of organophosphorus and synthetic pyrethroid groups that provides quick control of thrips, aphids, jassids, bollworms and mealybugs.

**Dosage:** 400-600 ml per acre

**Packing:** 100 ml, 250 ml, 500 ml, 1 litre



## **Laksh-405** **Ethion 40% + Cypermethrin 5% EC**

Laksh-405 is a dual-component formulation combining different chemical groups. It effectively controls bollworms in cotton and leaf-eating, caterpillar and sucking pests in vegetable and pulse crops.

**Dosage:** 400 ml per acre

**Packing:** 250 ml, 500 ml, 1 litre



## **Satark** **Cypermethrin 25% EC**

Satark is a highly effective contact and stomach-action synthetic pyrethroid insecticide that provides excellent control over chewing pests in various crops.

**Dosage:** 250-300 ml per acre

**Packing:** 250 ml, 500 ml, 1 litre

## Insecticides



### **Gracemida SC** Imidacloprid 30.5% SC

Gracemida SC is a systemic and contact insecticide belonging to the neonicotinoid group. It also controls termites found in wooden structures and effectively manages sucking pests like aphids, jassids, and thrips in various crops.

**Dosage:** 24-30 ml per acre

**Packing:** 50 ml, 100 ml, 250 ml, 500 ml, 1 litre



### **Grafos** Chlorpyrifos 20% EC

Grafos is a multifunctional organophosphorus insecticide that controls insects through contact, stomach and respiratory action. It provides effective control of both sucking pests and chewing insects across different crops.

**Dosage:** 400-2000 ml per acre (depending on the crop)

**Packing:** 250 ml, 500 ml, 1 litre

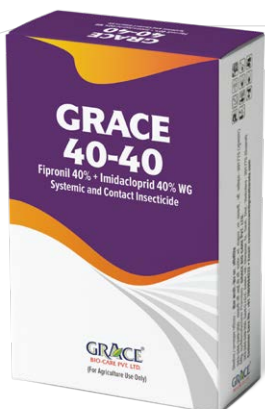


### **Grafos Super** Chlorpyrifos 50% EC

Grafos Super is an organophosphorus insecticide used for termite control in buildings, both before and after construction. It is also effective in cotton crops for controlling bollworms and armyworms.

**Dosage:** For cotton - 400-480 ml per acre

**Packing:** 250 ml, 500 ml, 1 litre



### **Grace 40-40** **Fipronil 40% + Imidacloprid 40% WG**

Grace 40-40 is an ideal contact and systemic insecticide that provides effective control of white grubs in sugarcane crops.

**Dosage:** Sugarcane: 175-200 gm per acre  
Groundnut: 100-120 gm per acre

**Packing:** 40 gm, 100 gm

## Fungicides



### Rakhwala

#### Azoxystrobin 18.2% + Difenoconazole 11.4% SC

Rakhwala is a broad-spectrum systemic fungicide containing two active ingredients from the strobilurin and triazole groups. It effectively controls diseases like anthracnose, powdery mildew, early and late blight, sheath blight, rust and dieback in various crops.

**Dosage:** 200 ml per acre

**Packing:** 100 ml, 200 ml, 500 ml, 1 litre



### Starlink

#### Pyraclostrobin 20% WG

Starlink is a modern broad-spectrum fungicide that controls a variety of fungal diseases in tomato, soybean, maize, cotton and other crops. It is also highly effective against soil-borne fungi. Through systemic and translaminar action it spreads within plants, controls fungal infections efficiently, and keeps crops healthy.

**Dosage:** 200 gm per acre

**Packing:** 60 gm, 100 gm, 200 gm



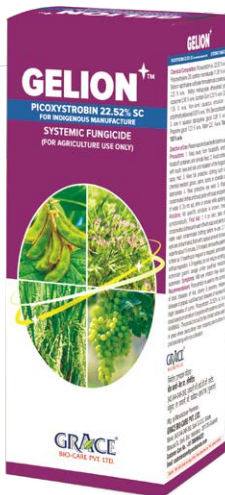
## Zoltan

### Tebuconazole 6.7% + Captan 26.9% SC

Zoltan is an advanced dual-action formulation effective against tikka and rust in groundnut crops through systemic and contact activity. It can be sprayed both preventively and curatively. Zoltan also provides excellent control of powdery mildew and anthracnose in other crops.

**Dosage:** 350-400 ml per acre

**Packing:** 250 ml, 500 ml, 1 litre



## Gelion

### Picoxystrobin 22.5% SC

**Systemic & Translaminar Action:** Binds to fungal cells, disrupting electron transport and halting fungal growth.

**Fast Absorption:** Gets absorbed and translocated within the plant within 2-3 hours of spraying.

**Powerful Protection:** Offers strong and long-lasting defense against a wide range of fungal diseases.

**Recommended sprays:** Two applications-first at 45 days after sowing and the second at 60 days.

**Dosage:** 160 ml per acre

**Packing:** 240 ml, 400 ml, 1 litre



## Hexacare Plus

### Hexaconazole 5% SC

Hexacare Plus is a systemic triazole-group fungicide with protective and curative properties. It effectively controls powdery mildew, sheath blight, scab, rust and wilt diseases.

**Dosage:** 300-350 ml per acre (for spraying)

**Packing:** 250 ml, 500 ml, 1 litre, 5 litres

## Fungicides



### Recover

#### Azoxystrobin 4.8% + Chlorothalonil 40% SC

Recover is a broad-spectrum fungicide used in cereal crops, potatoes, tomatoes and vegetables to control powdery mildew, downy mildew, leaf spot and anthracnose diseases. It works through dual action: Azoxystrobin provides systemic protection while Chlorothalonil acts externally as a contact protectant, ensuring both instant and long-lasting disease control on plant surfaces.

**Dosage:** 300 ml per acre

**Packing:** 150 ml, 300 ml, 600 ml



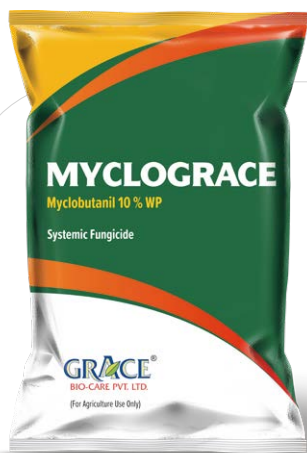
### Tarang

#### Tebuconazole 10% + Sulphur 65% WG

Tarang is a fungicidal mixture used in fruits, vegetables and other crops to control powdery mildew, rust, leaf spot, pod blight and fruit rot. In addition to fungicidal properties, it provides sulphur as a nutrient, improving oil content in oilseed crops.

**Dosage:** 400 gm per acre

**Packing:** 250 gm, 500 gm, 1 kg



### Myclograce

#### Myclobutanil 10% WP

Myclograce is a systemic fungicide that provides excellent control of powdery mildew, dieback, leaf spot and scab diseases in various vegetable and field crops.

**Dosage:** 200-250 gm per acre

**Packing:** 100 gm, 250 gm

## Fungicides

**GRACE**<sup>®</sup>  
BIO-CARE PVT. LTD.



### Canyon

#### Carbendazim 12% + Mancozeb 63% WP

Canyon is a unique fungicide containing Carbendazim (systemic) and Mancozeb (contact) components that offer both preventive and curative control against fungal diseases. When used as a seed treatment, Canyon protects crops from soil-borne and seed-borne diseases caused by fungi.

**Dosage:** 300-350 gm per acre (for spraying);  
2-3 gm per kg of seed (for seed treatment)

**Packing:** 250 gm, 500 gm, 1 kg

## Bio-Pesticides



### Trichovin W.P. Trichoderma viride 1.5% WP

Trichovin W.P. is a highly effective fungal bio-fungicide based on *Trichoderma viride*. It works on the natural principle of biological control, destroying harmful soil-borne pathogenic fungi such as wilt, root and stem rot, damping-off and white mold by feeding on them.

- Usage:**
1. Seed Treatment: To protect seeds from soil-borne fungi, mix 5-10 g of Tricovine per 1 kg of seed with a small amount of water and coat seeds uniformly.
  2. Soil Treatment: Mix 1 kg of Trichovin W.P. with 25 kg of compost/farmyard manure/sand per guntha, keep for 24 hours, and apply when the soil has adequate moisture.

**Dosage:** 1 kg, 5 kg

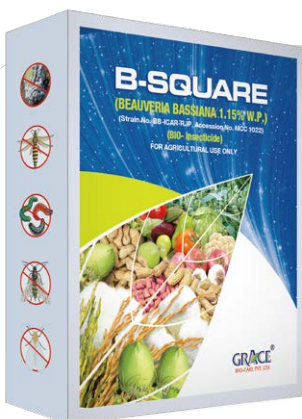


### Nemati Verticillium chlamydosporium 1.0% WP

Nemati protects all crops from root-inhabiting nematodes such as root-knot nematodes, wireworms and root worms.

**Usage:** Apply 2.5 kg per acre between 20-30 days after sowing by mixing with 50 kg of compost/farmyard manure/sand, ensuring adequate soil moisture or apply during irrigation.

**Packing:** 1 kg



### B-Square Beauveria bassiana 1.15% SP

B-Square is an entomopathogenic fungus that infects and controls various insect pests such as aphids, thrips, mealybugs and whiteflies.

**Dosage:** 500 gm per acre

**Packing:** 250 gm, 500 gm

**Note:** Do not mix Trichovin W.P., Nemati or B-Square with any chemical fungicide or fertilizer.



## **Glyfogrance** **Glyphosate 41% SL**

Glyfogrance is a systemic, non-selective herbicide used to control annual and perennial grasses and broadleaf weeds in agricultural and non-crop areas. It kills weeds from the root system.

**Dosage:** 800-1200 ml per acre

**Packing:** 1500 ml, 1 litre, 5 litres, 20 litres

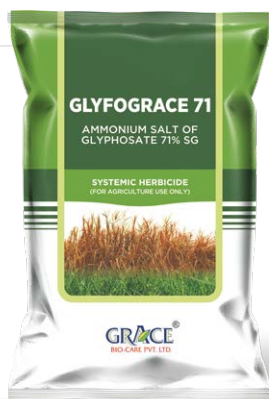


## **Glyfogrance-54** **IPA Salt of Glyphosate 54% SL**

Glyfogrance-54 is a non-selective herbicide used to control a wide range of weeds in agricultural and non-agricultural fields.

**Dosage:** 100 ml per 15 liters of water

**Packing:** 500 ml, 1 litre, 5 litres



## **Glyfogrance-71** **Ammonium Salt of Glyphosate 71% SG**

Glyfogrance-71 is a non-selective systemic herbicide absorbed through the leaves and translocated to the roots, providing complete control of weeds from the root system.

**Dosage:** 800-1200 gm per acre

**Packing:** 100 gm

## Herbicides/Weedicides



### **Pendigarde** Pendimethalin 30% EC

Pendigarde is a selective pre-emergence herbicide that controls annual grasses and certain broadleaf weeds before germination. It is used in crops like wheat, cotton, groundnut, cumin, castor, fennel, fenugreek, onion, garlic and sesame to protect them from weeds.

**Dosage:** 1–1.25 litres per acre (depending on soil type)

**Packing:** 250 ml, 500 ml, 1 litre, 5 litres



### **Panorama** Paraquat Dichloride 24% SL

Panorama is a non-selective contact herbicide that rapidly destroys the aerial parts of weeds, providing effective control of all types of weeds.

**Dosage:** 500–800 ml per acre

**Packing:** 250 ml, 500 ml, 1 litre, 5 litres



### **Gracemet Clean** Metribuzin 70% WP

Gracemet Clean is a contact and systemic herbicide from the triazinone group that controls weeds both before and after emergence in crops such as potato, soybean, tomato, and sugarcane.

**Dosage:** 100–500 gm per acre (depending on crop)

**Packing:** 500 gm



## Atracare Atrazine 50% WP

Atracare is a selective herbicide used in sugarcane and maize to control annual grassy and broadleaf weeds both pre- and post-emergence.

**Dosage:** Sugarcane: 1-1.5 kg per acre  
Other crops: 250-500 gm per acre

**Packing:** 250 gm, 500 gm



## Mesograce Mesotrione 2.27% + Atrazine 22.7% SC

Mesograce is a selective herbicide that provides quick and effective control of weeds in maize and sugarcane fields while keeping the crop weed-free for a long duration.

**Dosage:** 1400 ml per acre  
**Packing:** 350 ml, 700 ml, 1400 ml



## Topragrace Topramezone 336 g/L (w/v) SC

Topragrace effectively controls grassy and broadleaf weeds in maize crops. Its advanced formulation ensures targeted weed management that promotes optimal crop growth and higher yield.

**Dosage:** 30 ml per acre (for sugarcane and maize)  
**Packing:** 15 ml, 30 ml

## Herbicides/Weedicides



### **Oxygrace** **Oxyfluorfen 23.5% EC**

Oxygrace is a selective herbicide used to control broadleaf weeds both before and after their emergence in onion, vegetable, crop and non-crop areas.

**Dosage:** 100 ml per acre

**Packing:** 50 ml, 100 ml, 250 ml



### **Glufomax Clean** **Glufosinate Ammonium 13.5% SL**

Glufomax Clean is a non-selective herbicide that provides excellent control of annual, broadleaf and grassy weeds in both agricultural and non-agricultural lands.

**Dosage:** 1000-1200 ml per acre

**Packing:** 500 ml, 1 litre



### Grace Sil

Grace Sil is a highly effective silicone-based non-ionic spreading agent that ensures even distribution of pesticides.

**Dosage:**

- With insecticides or fungicides: 2.5-3 ml per 15 litres of water
- With herbicides: 5-6 ml per 15 litres of water

**Packing:** 10 ml, 50 ml, 100 ml, 250 ml, 500 ml, 1 litre



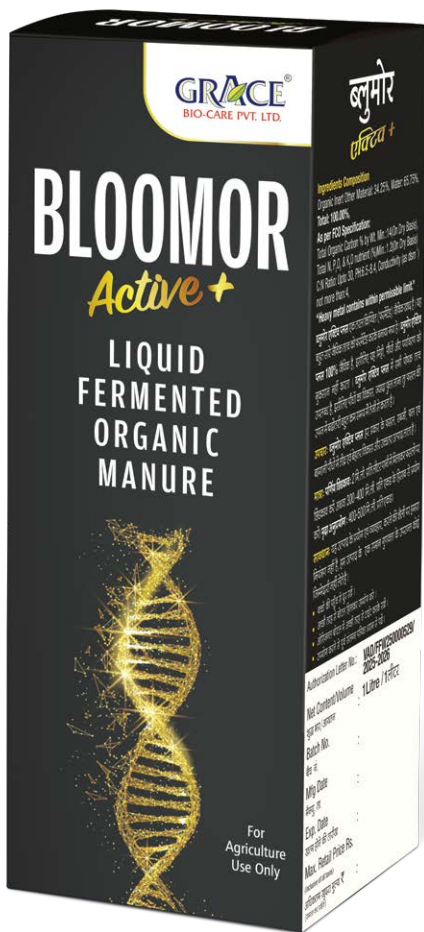
### Grace Wet-80

Grace Wet-80 is a versatile, low-foaming, non-ionic wetting agent that helps even with spreading and adhesion of spray solutions and assists in deeper penetration of chemicals into leaves.

**Dosage:**

- With insecticides and fungicides: 10-12 ml per 15 litres of water
- With herbicides: 15-20 ml per 15 litres of water

**Packing:** 250 ml, 500 ml, 1 litre, 5 litres



## Bloomor (Active +) Liquid Fermented Organic Manure

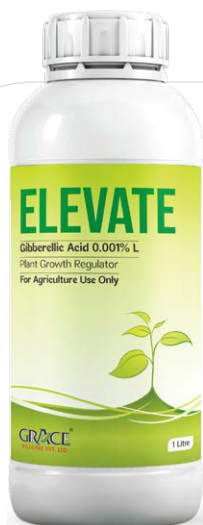
Bloomor (Active +) is a research-based organic product designed to increase crop yields with powerful results. It contains multiple beneficial microorganisms along with a high quantity of soil-enriching organic carbon. It is suitable for a wide range of crops including cotton, groundnut, soybean, pigeon pea, cumin, paddy and all vegetables such as chili, tomato, okra, brinjal, potato, onion, garlic, watermelon, cucurbits, as well as tobacco, rose, mango, and other agricultural crops. It can increase minimum by at least 30%.

**Benefits:** Lower cost - higher yield - greater profit.

**Dosage:**

- Soil application: 400 ml per acre
- Foliar spray: 300 ml per acre

**Packing:** 30 ml, 100 ml, 250 ml, 500 ml, 1 litre



## Elevate Gibberellic Acid 0.001% L

Elevate is a scientifically formulated biostimulant made from the combination of seaweed extract, sulphates of magnesium, zinc, ferrous and manganese, and hydrolyzed protein (amino acids) blended with gibberellic acid. It accelerates plant growth and development.

**Dosage:**

- Foliar spray: 2-3 ml per litre of water
- Soil application: 1-1.5 litres per acre

**Packing:** 100 ml, 250 ml, 500 ml, 1 litre

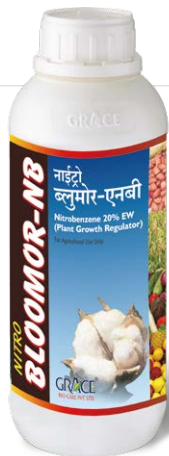


## Paclograce

### Paclobutrazol 23% SC

Paclograce is a plant growth regulator that controls excessive vegetative growth and redirects plant energy towards reproductive development, resulting in increased yields. It is commonly used on mango, pomegranate and groundnut crops. Recommended dosage and usage vary depending on the crop.

**Packing:** 50 ml, 100 ml, 1 litre



## Nitro Bloomor-NB

### Nitrobenzene 20% EW

Nitro Bloomor-NB acts as a powerful plant growth promoter, increasing flowering, improving root development and enhancing nutrient absorption from the soil, which leads to higher crop productivity.

**Dosage:** 300-400 ml per acre

**Packing:** 100 ml, 250 ml, 500 ml, 1 litre



## Grace Hume-L

### Humic Acid-Based Liquid Organic Product

Grace Hume-L is a natural organic-based liquid formulation containing humic acid that promotes overall plant growth while improving yield and quality of produce.

**Dosage:** 500 ml per acre

**Packing:** 250 ml, 500 ml, 1 litre



**Registered Office  
GRACE BIO-CARE PVT. LTD.**

343-344-349-350, Savli G.I.D.C. Estate, Vill.: Manjusar,  
Ta.: Savli, Dist.: Vadodara - 391775 (Gujarat)

**Customer Care No.:** +91 7069984222

**Email:** [customercare@gracebaroda.com](mailto:customercare@gracebaroda.com)  
[office@gracebaroda.com](mailto:office@gracebaroda.com)

**Web:** [www.gracebiocare.com](http://www.gracebiocare.com)